

Sending Rations on AminoCow

Catalog: C:\Program Files\Mepron30\Data\MEP30_depewtesting.MDB

Group:

Select Item and then Select Menu Option

Selected

Ration	Description:	Group	Date:	Prepared by:	Breed
Test herd	Test herd	One TMR	3/10/2004		Holstein
Test Herd aa	Test herd	One TMR	5/5/2004		Holstein
Test Herd aa2	Test herd	One TMR	5/5/2004		Holstein
Test Herd aa3	Test herd	One TMR	5/5/2004		Holstein
THerd aa3 Bal	Test herd	One TMR	6/3/2004		Holstein

**Start in the Ration Manager screen.
The ration(s) contained in your
current catalog are displayed.**

Retrieve Send To Get External Ration Move/Copy Duplicate Show Delete Quit

Catalog: C:\Program Files\Mepron30\Data\MEP30_depewtesting.MDB

Group:

Select Item and then Select Menu Option

Selected

Ration	Description:	Group	Date:	Prepared by:	Breed	
Test herd	Test herd	One TMR	3/10/2004		Holstein	L
Test Herd aa	Test herd	One TMR	5/5/2004		Holstein	L
Test Herd aa2	Test herd	One TMR	5/5/2004		Holstein	L
Test Herd aa3	Test herd	One TMR	5/5/2004		Holstein	L
THerd aa3 Bal	Test herd	One TMR	6/3/2004		Holstein	L

Retrieve **Send To** Get External Ration Move/Copy Duplicate Show Delete Quit

Highlight the ration you want to send and click on the “Send To” button.

Catalog: C:\Program Files\Mepro30\Data\MEP30_depewtesting.MDB

Group:

Select Item and then Select Menu Option

Selected

Ration	Description:	Group	Date:	Prepared by:	Breed
Test herd	Test herd	One TMR	3/10/2004		Holstein
Test Herd aa	Test herd	One TMR	5/5/2004		Holstein
Test Herd aa2	Test herd	One TMR	5/5/2004		Holstein
Test Herd aa3	Test herd	One TMR	5/5/2004		Holstein
THerd aa3 Bal	Test herd	One TMR	6/3/2004		Holstein

AminoCowUpdate

Warning: Mixes in Exported Rations should be expanded before export.

OK

Cancel

Retrieve Send To Get External Ration Move/Copy Duplicate Show Delete Quit

After clicking “Send To”, a warning appears saying “Mixes in Exported Rations should be expanded before export.”

You MUST expand mixes prior to emailing; otherwise, the receiving computer will not be able to properly interpret the mixes. Thus, the ration will be incorrect. If the mixes are expanded or you do not have a mix in the ration, click “OK” to continue.

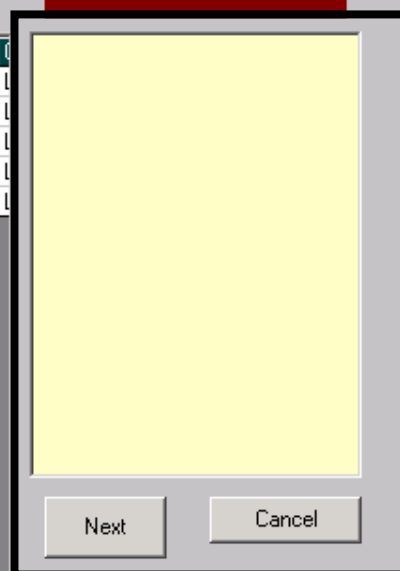
Catalog: C:\Program Files\Mepron30\Data\MEP30_depewtesting.MDB

Group:

Select Item and then Select Menu Option

Ration	Description:	Group	Date:	Prepared by:	Breed
Test herd	Test herd	One TMR	3/10/2004		Holstein
Test Herd aa	Test herd	One TMR	5/5/2004		Holstein
Test Herd aa2	Test herd	One TMR	5/5/2004		Holstein
Test Herd aa3	Test herd	One TMR	5/5/2004		Holstein
THerd aa3 Bal	Test herd	One TMR	6/3/2004		Holstein

Selected



Retrieve **Send To** Get External Ration Move/Copy Duplicate Show Delete Quit

Select Rations To Send and Click Next to continue.

After clicking on "OK", this screen will appear and display a box on the right labeled "Selected".

Catalog: C:\Program Files\Mepron30\Data\MEP30_depewtesting.MDB

Group:

Select Item and then Select Menu Option

Selected

Ration	Description:	Group	Date:	Prepared by:	Breed
Test herd	Test herd	One TMR	3/10/2004		Holstein
Test Herd aa1	Test herd	One TMR	5/5/2004		Holstein
Test Herd aa2	Test herd	One TMR	5/5/2004		Holstein
Test Herd aa3	Test herd	One TMR	5/5/2004		Holstein
THerd aa3 Bal	Test herd	One TMR	6/3/2004		Holstein

Test herd

Next

Cancel

Retrieve Send To Get External Ration Move/Copy Duplicate Show Delete Quit

Select Rations To Send and Click Next to continue.

The ration that you highlighted should appear in the selected box.

Select Item and then Select Menu Option

Selected

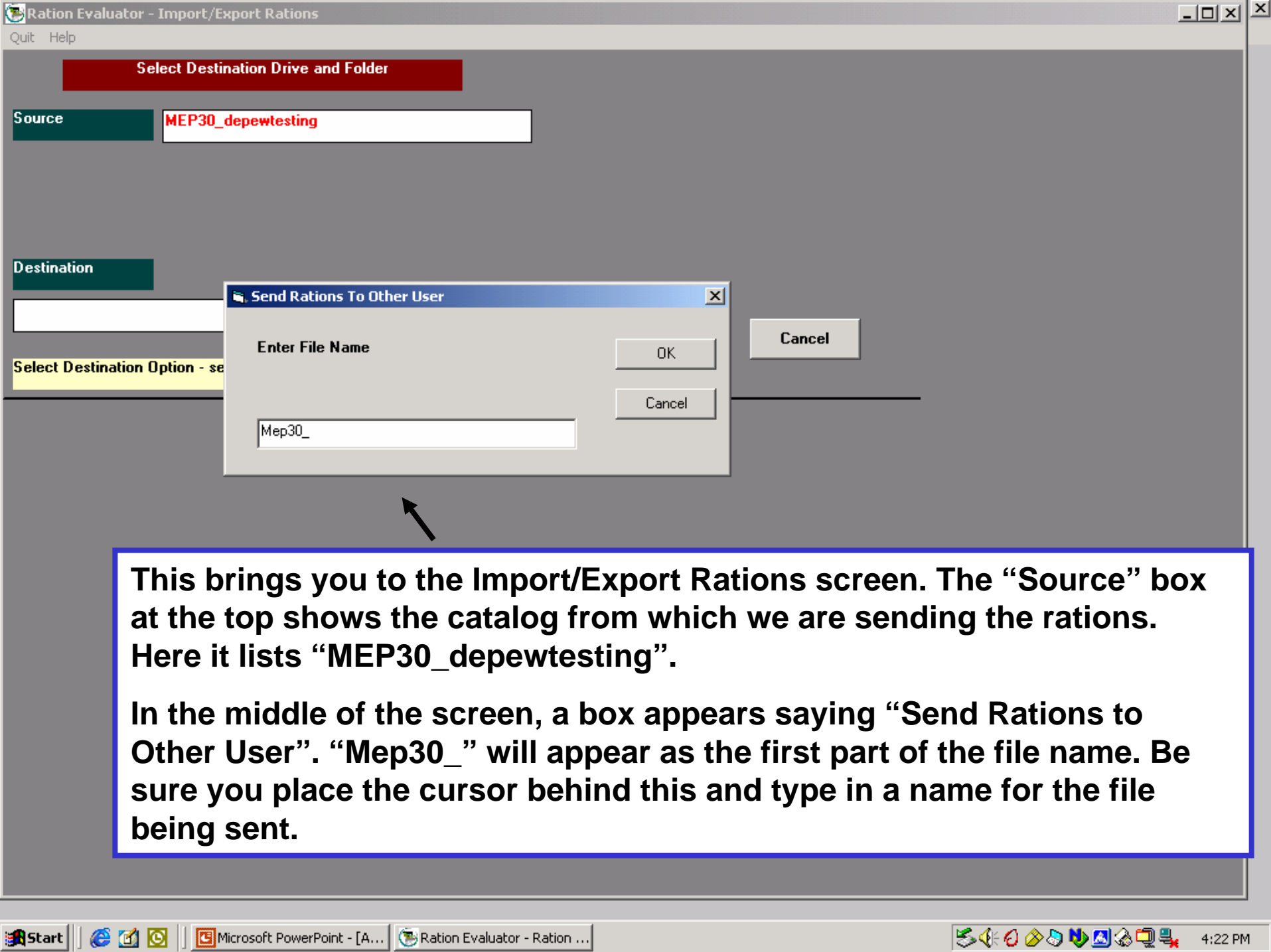
Ration	Description:	Group	Date:	Prepared by:	Breed	
Test herd	Test herd	One TMR	3/10/2004		Holstein	
Test Herd aa	Test herd	One TMR	5/5/2004		Holstein	
Test Herd aa2	Test herd	One TMR	5/5/2004		Holstein	
Test Herd aa3	Test herd	One TMR	5/5/2004		Holstein	
THerd aa3 Bal	Test herd	One TMR	6/3/2004		Holstein	

- Test herd
- Test Herd aa
- Test Herd aa2

Next Cancel

Retrieve Send To Get External Ration Move/Copy Duplicate Show Delete Quit

More than one ration may be sent from the catalog displayed. Simply highlight additional rations to move them to the selected box. For our example, we will select and send 3 rations. When the desired rations are in the "Selected" box, click "Next".



This brings you to the Import/Export Rations screen. The “Source” box at the top shows the catalog from which we are sending the rations. Here it lists “MEP30_depewtesting”.

In the middle of the screen, a box appears saying “Send Rations to Other User”. “Mep30_” will appear as the first part of the file name. Be sure you place the cursor behind this and type in a name for the file being sent.

Select Destination Drive and Folder

Source

MEP30_depewtesting

Destination

Select Destination Option - se

Send Rations To Other User

Enter File Name

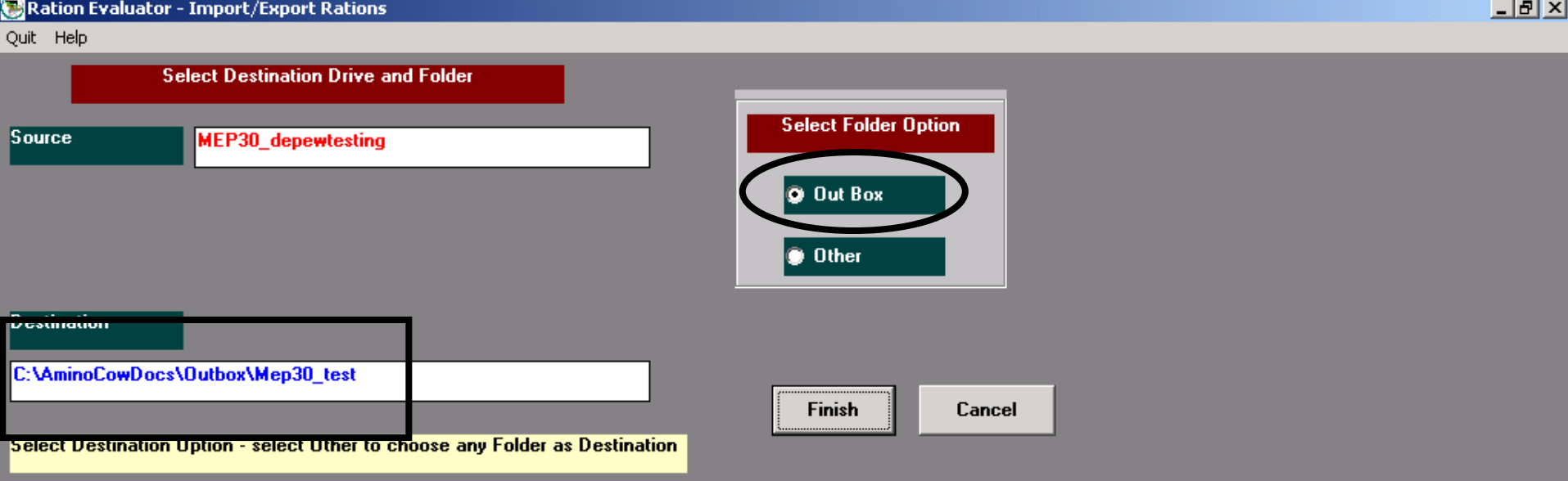
Mep30_test

OK

Cancel

Cancel

The file name is "test". Click "OK" once you have the appropriate file name behind "Mep30_"



Now, the “Select Destination Drive and Folder” screen appears. The “Select Folder Option” has a default setting to the Out Box, so our destination is the C:\ drive. The Destination path is C:\AminoCowDocs\Outbox\Mep30_test”. Click “Finish”. This is one option for sending rations.

Select Destination Drive and Folder

Source

Select Folder Option

Out Box

Other

Destination

Finish

Cancel

Select Destination Option - select Other to choose any Folder as Destination

AminoCowUpdate

Ration copied to C:\AminoCowDocs\Outbox\Mep30_test.Txt

OK

The screen now says “Ration copied to
C:\AminoCowDocs\Outbox\Mep30_test.Txt”
Click “OK”, and your ration is saved to that location.

Attach Ration to E-mail

- ⊗ **The ration is ready to be attached to e-mail. It is located at C:\AminoCowDocs\Outbox\Mep30_test.txt**

Select Destination Drive and Folder

Source MEP30_depewtesting

Select Folder Option

Out Box

Other

Destination C:\AminoCowDocs\Outbox\Mep30_test

Finish Cancel

Select Destination Option - select Other to choose any Folder as Destination

Select Drive And Folder

Drive	Folder
c:	C:\
	AminoCowDocs
	Inbox
	Outbox

Next

If you mark "Other" in the "Select Folder Option", the "Select Drive And Folder" pop-up appears. Here, the C:\ drive is displayed and you can put the rations in an existing folder. Or you can click on the drop down box and select another drive.

Select Destination Drive and Folder

Source

Select Folder Option

Out Box

Other

Destination

Finish

Cancel

Select Destination Option - select Other to choose any Folder as Destination

Select Drive And Folder

Drive	Folder
a:	a:\

Next

We selected "Drive a:", so now under the heading 'Folder', "a:\" appears. You may also select your USB drive, if available. USB memory sticks are an easy way to transfer data from computer to computer.

Select Destination Drive and Folder

Source

MEP30_depewtesting

Select Folder Option

 Out Box Other

Destination

a:\Mep30_test

Finish

Cancel

Select Destination Option - select Other to choose any Folder as Destination

Select Drive And Folder

Drive

a:

Folder

a:\

AminoCowUpdate

Ration copied to a:\Mep30_test.Txt

OK

Next

When complete, the screen will tell you to where the ration was copied: "Ration copied to a:\Mep30_test.Txt". Click "OK".

Select Destination Drive and Folder

Source MEP30_depewtesting

Select Folder Option

Out Box

Other

Destination a:\Mep30_test

Finish Cancel

Select Destination Option - select Other to choose any Folder as Destination

Select Drive And Folder

Drive	Folder
a:	a:\

Next

You have done it. At this point, simply click "Quit" at the top of the page, and you will return to the Ration Manager screen.

Upon Receipt of a Ration

- ⊗ **Should you receive a ration, detach the .txt file that contains the rations, and save it on your computer.**
- ⊗ **Note C:\AminoCowDocs\Inbox has been set up as a handy repository for these rations.**
- ⊗ **To pull rations into the catalog you are working with, go to the Ration Manager screen.**

Select Item and then Select Menu Option

Selected

Ration	Description:	Group	Date:	Prepared by:	Breed	
Basic	Basic		8/7/2003		Holstein	L
Beispiel Grassilage	Beispielsration auf Basis Grassilage		8/7/2003	WH	Holstein	L
Beispiel Mais-/Grassilage	Beispielsration auf Basis Mais-unc		8/7/2003	WH	Holstein	L
Beispiel Maissilage	Beispielsration auf Basis Maissilage		8/7/2003	WH	Holstein	L
Racion Mexicana	Racion Mexicana		8/9/2003		Holstein	L
Standard test	aa in mix		4/9/2006	WH	Holstein	L
Standard_lbs_User	AminoCow Sample Ration		10/13/2005	WH	Holstein	L
Standard_Metric_User	AminoCow Sample Ration		4/9/2006	WH	Holstein	L
Standard_MJ_User	AminoCow Sample Ration		8/7/2003	WH	Holstein	L

Retrieve Send To **Get External Ration** Move/Copy Duplicate Show Delete Quit

Select “Get External Ration”. You will be presented with the choice “Inbox” or “Other”. Select where the ration resides.

Duplicate Name can be changed during import

Source

Destination

Finish

Cancel

Select Source and Then Press Next

Select Drive, Folder and Ration and Click OK

Drive

d: ▼

Folder

- D:\
- AminoCowDocs
- Inbox

Ration/Catalog

- Mep30_Gerandor May 20th almost final.Txt
- Mep30_hubbard.Txt
- Mep30_hubbardnow.Txt
- Mep30_hubbardnow_0502.Txt

Here, select the ration or catalog you want to bring into AminoCow.

Next

Browse

Adding to your Catalog

- ❁ **Click “Next” and the rations will be added to your current catalog.**
- ❁ **The rations will initially appear at the bottom of your list, but will be saved alphabetically when you exit.**
- ❁ **Simply highlight the ration you want to work with and click “Retrieve”.**